

The OBSTA HISTIM is built in two parts : converter (item # 13155) and lamp (item # 13156).

TECHNICAL DATA :

- Nominal voltage: from 220 to 240 V rms - 50/60 Hz.
- Tolerances : min -10%, max +10%.
- Rated power : 50 W.
- Protection against transient waves (Impulses < 1 ms) : built into the supply cable.
- Fault warning feature : yes (see electrical wiring).
- Working temperature: -30° C to +60° C.
- Warning contact maximum current: 5 Amps rms.

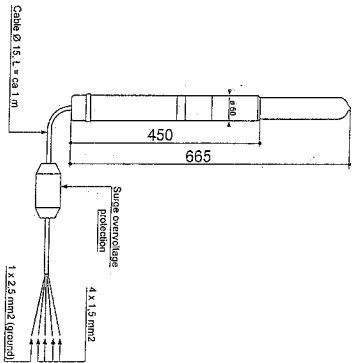
SETTING UP :

- When installed on a chimney, the OBSTA HISTIM must be set below the aperture (from 1,5 meter to 3 meters) so that the smokes will not shadow on the light (CAO annex 14, chapter 6).
- The ambient temperature must be lower than 60° C in order not to damage the electronics.
- When installed near a high electro-magnetic field transmitter, the OBSTA HISTIM operation may be disturbed.
- OBSTA HISTIM doesn't operate in blinking mode.

ELECTRICAL WIRING :

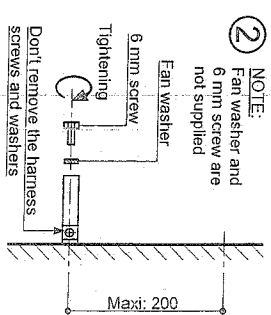
- For installation with RFI risk, the power supply cable must be shielded.
- Wiring accessories are not supplied (boxes, entries, glands, ...). Consult us.
- Do not cut the cable with the moulded protection off (see figure above).
- Install in the circuit an over current protection, with a 6 Amp. gf fuse, at easy reach.
- The electrical diagram is engraved on the body of the OBSTA HISTIM converter.
- An alarm relay is built into the converter, allowing automatic switching of lights in case of failure, if twin lamps are installed (see drawing). The alarm switch can be used to supply the stand-by lamp and/or a remote alarm (buzzer, light...) with the above mentioned characteristics.

DIMENSIONS : (in mm)

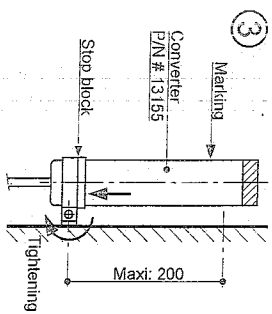
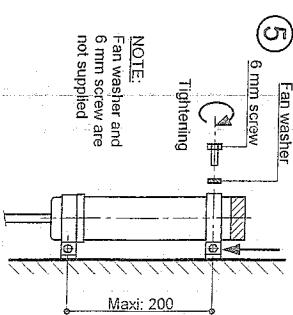


MOUNTING : Follow strictly these instructions.

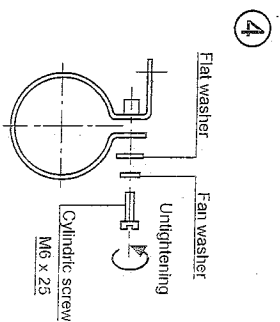
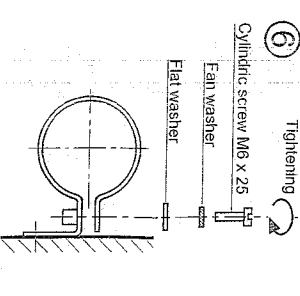
- 1 DRILL 2 HOLES IN THE WALL FOR Ø 6 mm FIXATION SCREWS. LENGTH BETWEEN TWO HOLES : 200 mm MAXI.



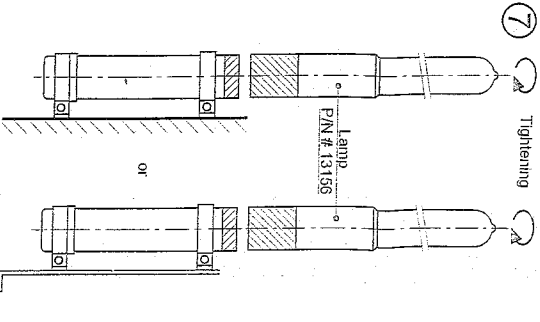
MOUNTING OF LOWER HARNESS ON THE WALL AND TIGHTENING OF Ø 6 mm SCREW



MOUNTING OF CONVERTER IN THE LOWER HARNESS AND TIGHTENING OF HARNESS SCREW



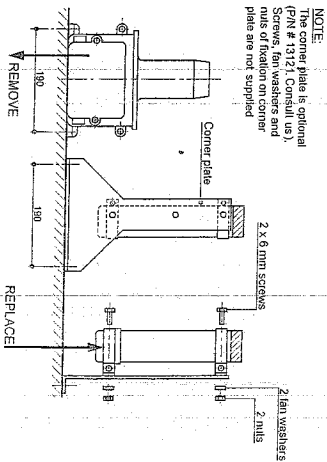
UNSCREWING OF UPPER HARNESS SCREW AND WASHERS



SETTING-UP OF UPPER HARNESS ON TO THE CONVERTER AND TIGHTENING OF WALL SCREW

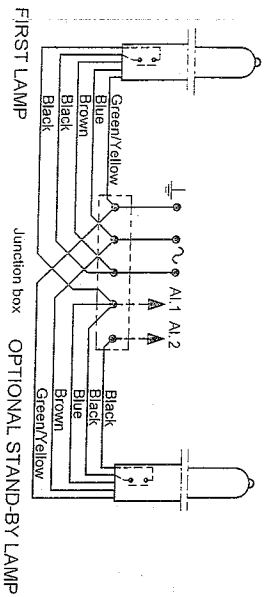
SETTING-UP AND TIGHTENING OF THE UPPER HARNESS SCREW AND WASHERS

SUBSTITUTION :



VIGOROUS HAND-TIGHTENING OF THE LAMP ON THE CONVERTER

Reliability and security of warning lights are guaranteed only if normally used



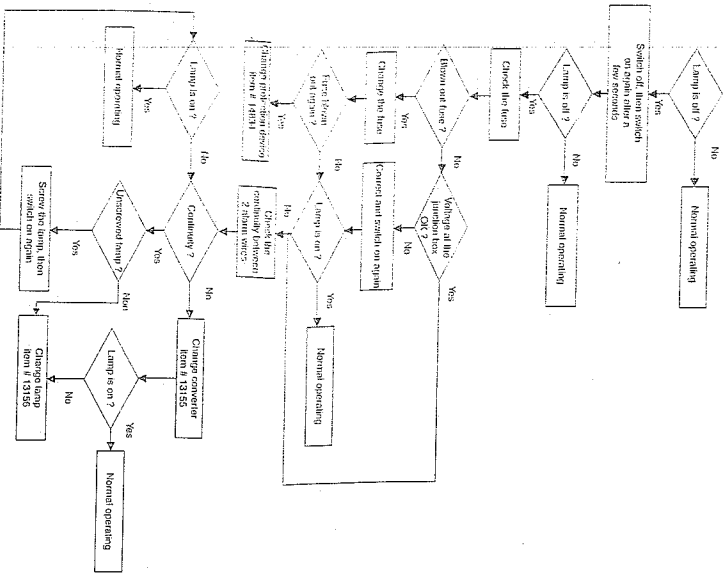
FIRST RUN :

CAUTION :

When switched on for the first time it is strictly recommended not to test the circuit with a high voltage generating tester lest electronic components be destroyed. Before switching on, make sure that the line voltage is within the prescribed tolerances.

MAINTENANCE IN CASE OF FAILURE :

Quick trouble shooting synoptic.



Note : No Lamp or a faulty lamp is signaled by fault signal.

Before changing lamp, power supply must be switch off.

PROTECTION DEVICE REPLACEMENT :

The protection device against transient surge is directly connected and moulded to the cable. In normal operation, it will absorb the energy carried by the transients and self restore automatically, guarding for the next perturbances.

In case of a high power overvoltage surge, it will fail short in order to protect the lamp's electronics. For replacement, cut it off, and connect a new one. The junction must be well protected against weather. Exact CLAUDE reference of this protection for OBSTA HISTIM is item # 14834. It is advisable to cast the assembly in a special enclosure such as SCOTCHCAST 3M item # 92-A2F.

We have designed our packaging in order to assure that our products may be shipped and stored without undergoing any damage. ALL PRODUCTS NOT TRAVELLING IN THEIR ORIGINAL PACKAGING, INCLUDING PRODUCTS BEING RETURNED TO OUR FACTORY FOR ANY REASON, ARE NOT COVERED, IN ANY CASE, BY THE MANUFACTURER'S WARRANTY.